

Bitterroot Resources Ltd.

Nighthawk Gold Property

March 20, 2023

***View looking east from
mineralized rhyolite outcrop,
toward the Boss Mine, Berg and
Castle Gold Deposits***

***Mr. Rick Streiff, CPG, is the Qualified Person responsible for
the technical content of this slide presentation***

Forward Looking Statements

Certain statements contained in this slide presentation may constitute forward-looking statements under securities legislation. Generally, forward-looking information can be identified by the use of forward-looking terminology such as “expects” or “it is expected”, or variations of such words and phrases or statements that certain actions, events or results “will” occur. This document contains statements about expected or anticipated future events and/or financial or exploration results that are forward-looking in nature and as a result, are subject to certain risks and uncertainties, such as general economic, market and business conditions, regulatory processes and actions, technical issues, new legislation, competitive conditions, the uncertainties resulting from potential delays or changes in plans, the occurrence of unexpected events and the company’s ability to execute and implement its future plans. Actual events may differ materially from those projected in the forward-looking statements. When relying on forward-looking statements to make decisions, investors and others should carefully consider the foregoing factors and other uncertainties and should not place undue reliance on such forward-looking statements. The Company does not undertake to update any forward-looking statements, except as may be required by applicable securities laws. For such forward-looking statements, we claim the safe harbour for forward-looking statements within the meaning of the Private Securities Legislation Reform Act of 1995.

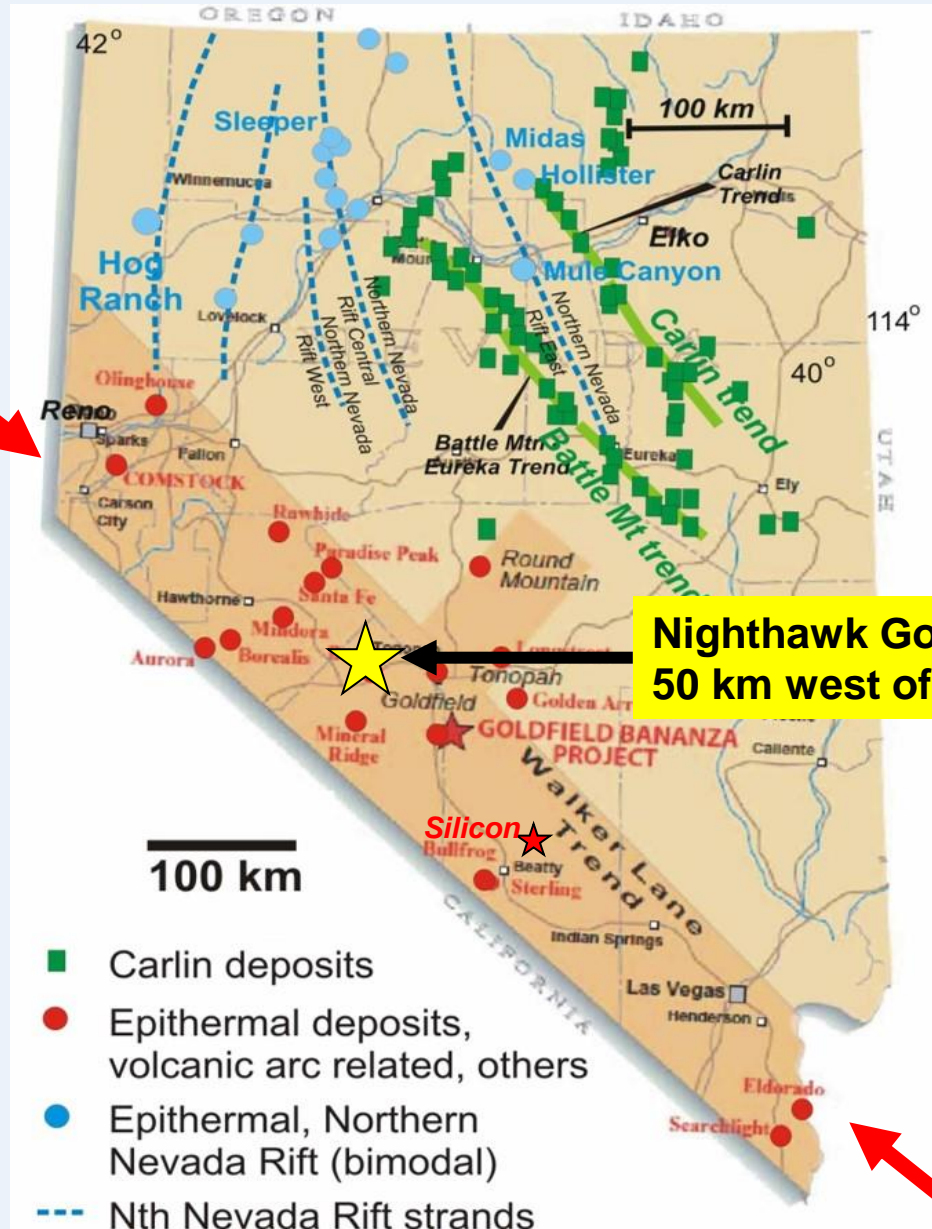
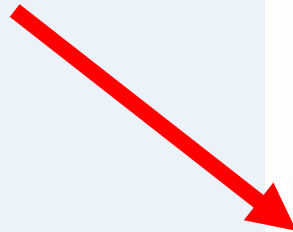
Nighthawk Property - Targets

- Near-surface, oxide gold mineralization, amenable to low-cost open pit mining and heap leaching
- Proprietary aeromagnetic survey identifies previously unknown multi-km scale targets
(Rhyolite domes and altered vertical structures)
- Potential for Silicon* grades at a lower strip ratio
(*0.87 g Au/t, 4.3 to1 strip ratio)

** Source: Bartos, Doyle, Nicholson and Thompson in 2022 GSN Symposium Proceedings*

Nevada – The Leading US Mining State*

Walker Lane Gold District

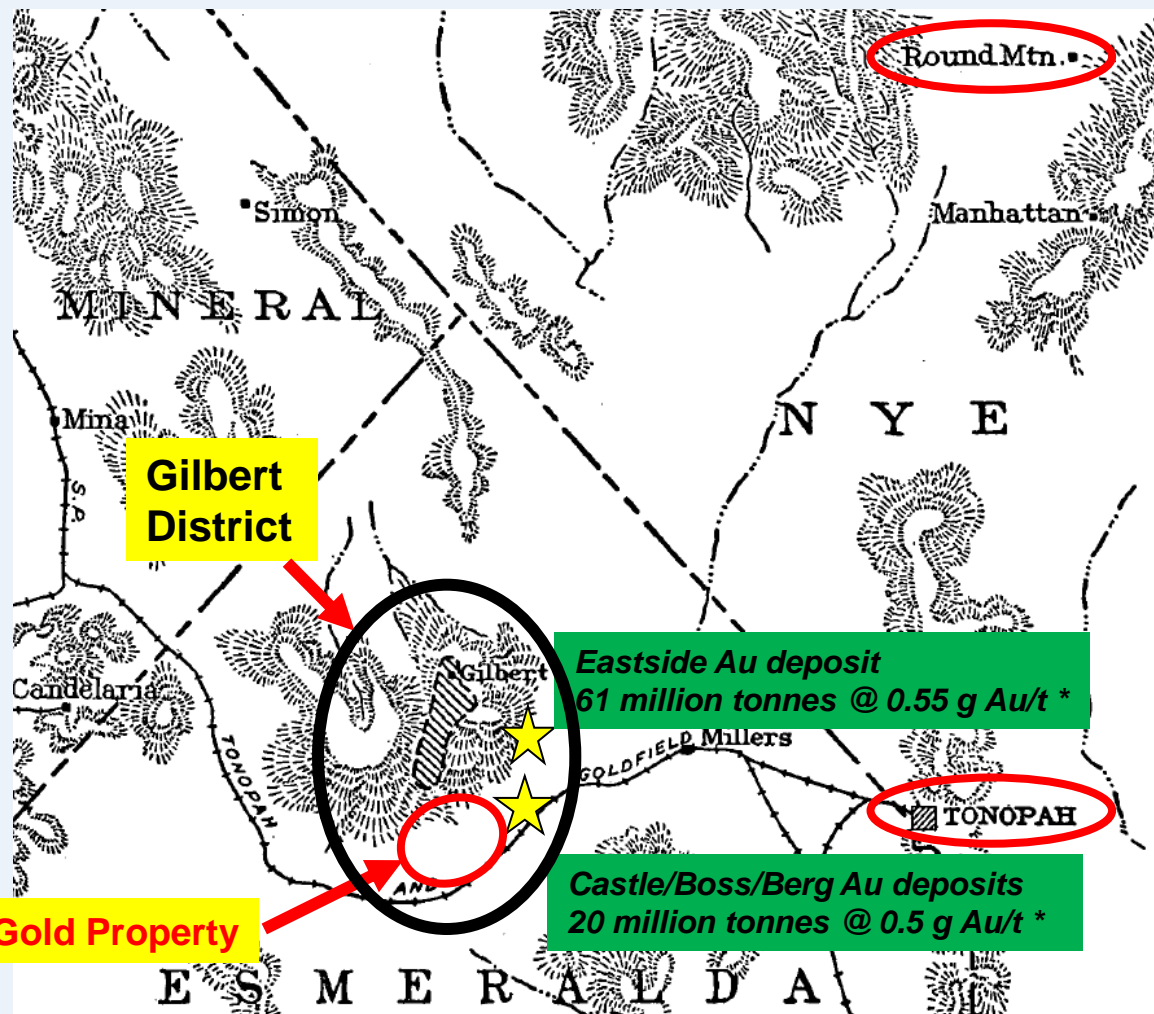


Nighthawk Gold Project
50 km west of Tonopah



* Source: Fraser Institute

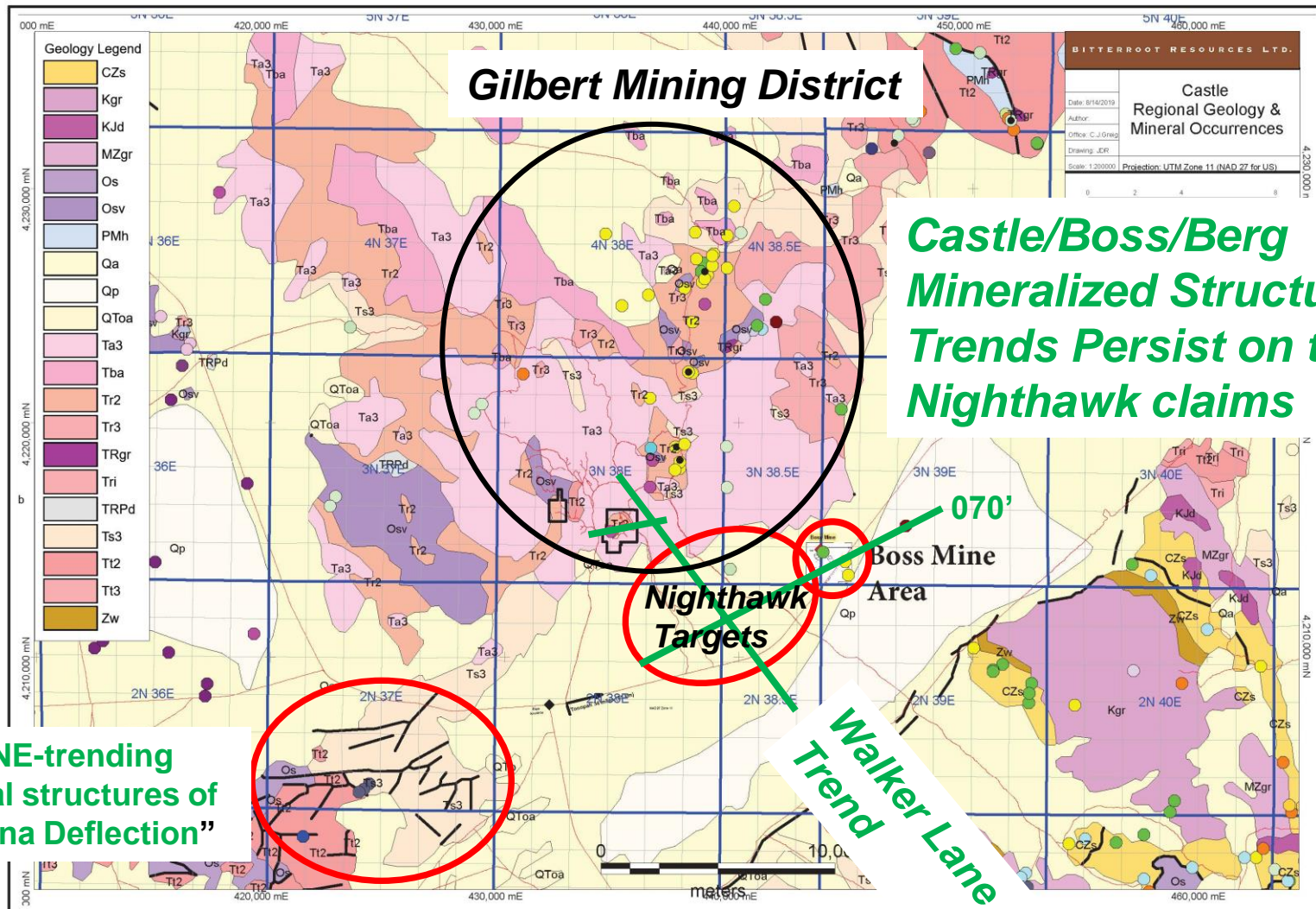
Gilbert Mining District



* **Source:** Mine Development Associates, July 30, 2021 “Updated Resource Estimate and NI 43-101 Technical Report, Eastside and Castle Gold-Silver Property, Esmeralda County, Nevada for Allegiant Gold Ltd.

Base map from USGS Bulletin 795, Ferguson, 1927

Mineralized Trends in the Castle/Boss/Berg Area

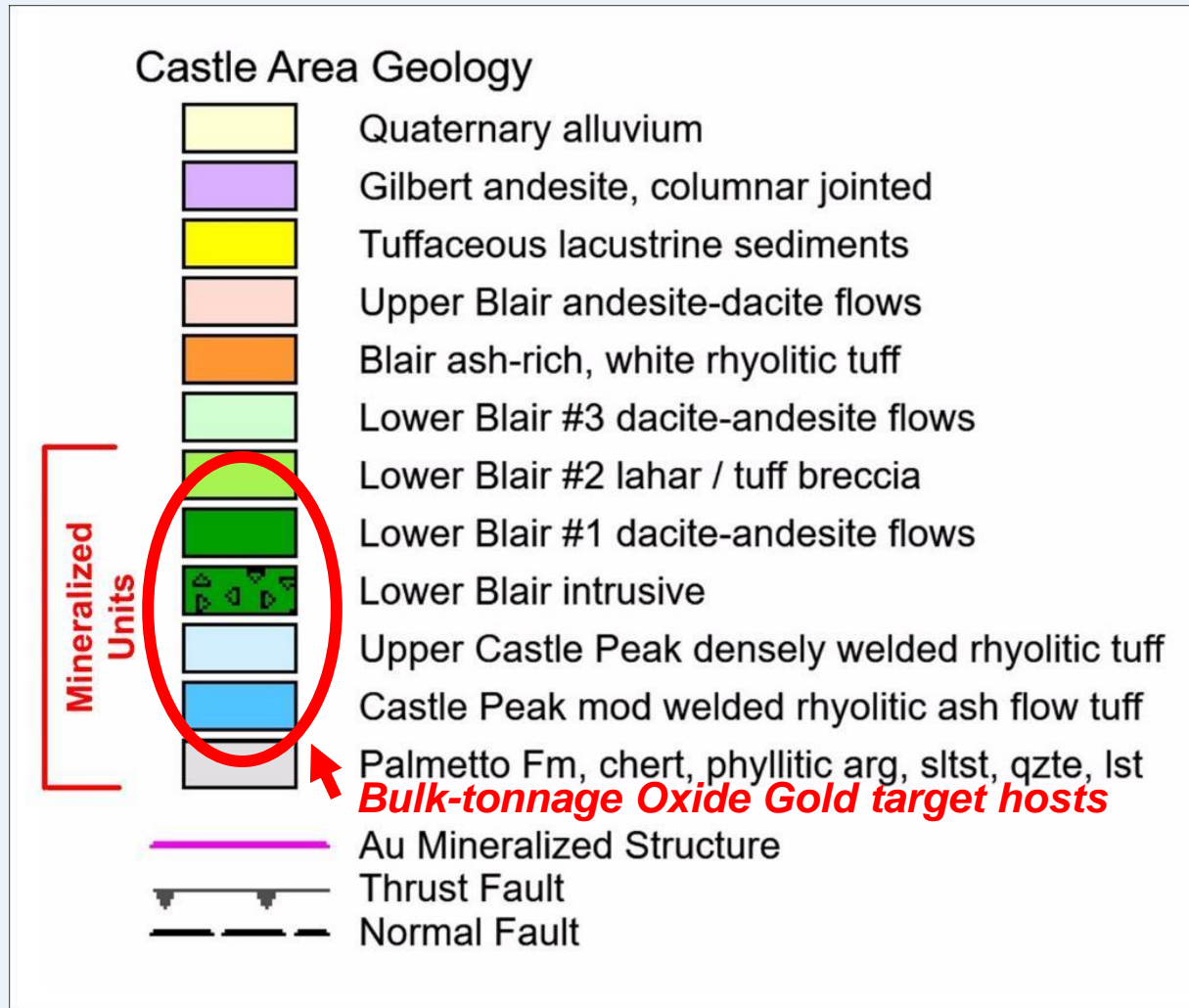


Source: USGS

Nighthawk Property

Regional Miocene Volcanic Stratigraphy

29 Ma to 7 Ma

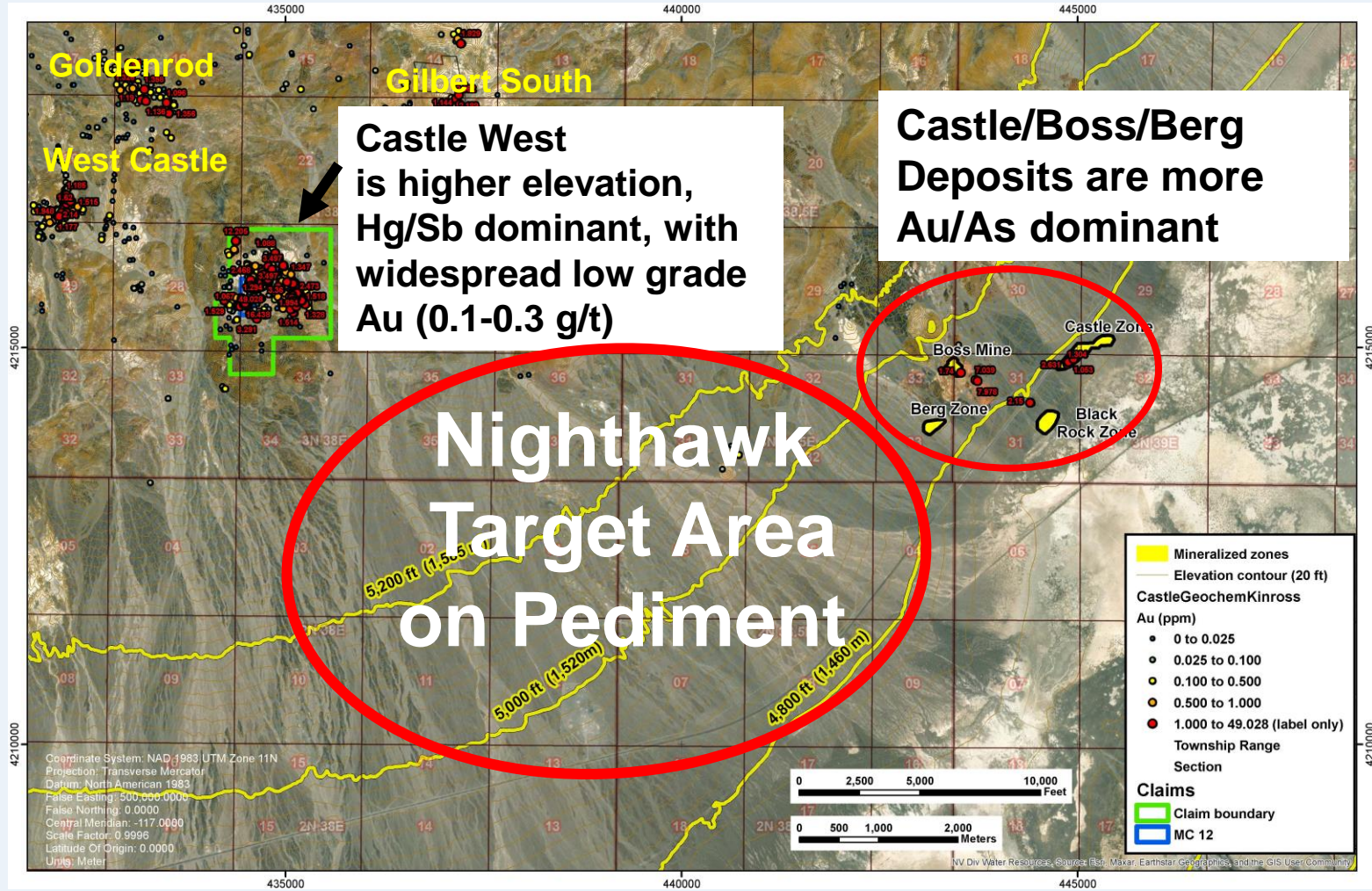


“Pediment”

“A plain of eroded bedrock (often covered by a thin veneer of alluvium) in an arid region, developed between mountain and basin areas”

- Pediment at Nighthawk masks a 60 square-km prospective area adjacent to the Castle/Boss/Berg oxide gold deposits

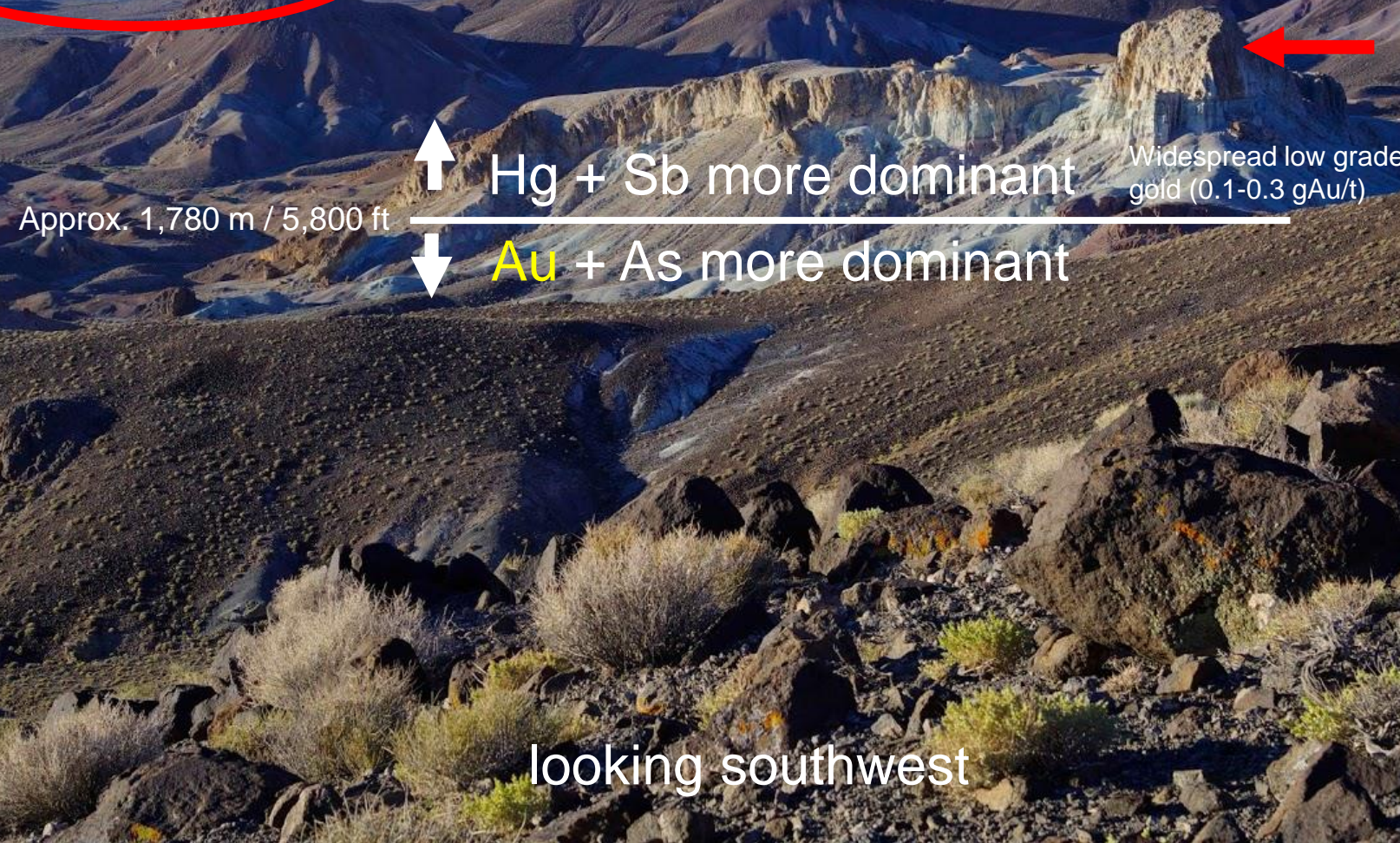
Nighthawk Targets at Same Elevation as Castle/Boss/Berg gold deposits



Castle West - Alteration Zone and Geochemical Anomaly

Nighthawk Property targets in pediment at 1400-1600 m elevation

Pediment target is in altered, permeable rhyolite and andesite tuff horizons in the same stratigraphy exposed at Castle Peak



Hg + Sb more dominant

Widespread low grade gold (0.1-0.3 gAu/t)

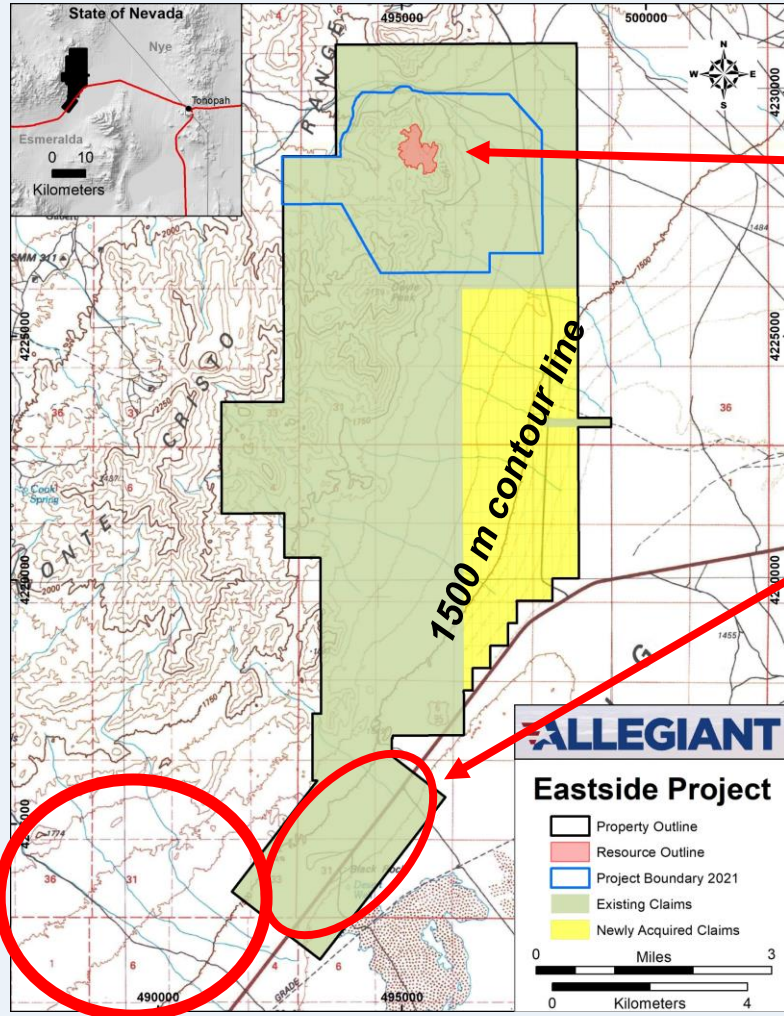


Au + As more dominant

Approx. 1,780 m / 5,800 ft

looking southwest

In mid-2022, Allegiant Gold added 194 new Claims over a new discovery under pediment within the 1400-1600 metres ASL elevation Range



Eastside deposit
61 million tonnes @
0.55 g Au/t
Au mineralization at
1,400-1,700 metres ASL

Castle/Boss/Berg Area
deposit elevations
1,400 – 1,600 metres ASL

4 Oxide Au deposits
~20 million tonnes @ 0.5 g Au/t

**Nighthawk
Claims area**

Nighthawk Gold Property Exploration Timeline

- Prospecting (Dec 2022) has identified gold-mineralized outcrop and float associated with **Rhyolite domes** and **magnetic lows**, as seen at the **Eastside** and **Castle/Boss/Berg** deposits*
- Drone Aeromagnetic survey (Jan 2023) of Pediment has identified **multi-km scale domes and linear structures**
- 163 Claims staked and recorded (Feb 2023), covering 5 square miles (13 square km)

** Source: Diner and Strachan, 1994, Geology of the Boss Mining Area, Gilbert District, Esmeralda County, Nevada: Economic Geology, Vol 89, pp 1176-1182.*

Castle/Boss/Berg Deposits

- 20 million tonnes grading 0.49 g Au/t, Inferred Resource, open laterally and at depth*
- West edge of the unconstrained Berg Deposit is only 300 metres from the Nighthawk Property boundary
- Mineralization is associated with **vertical structures, horizontal structures and Rhyolite domes**

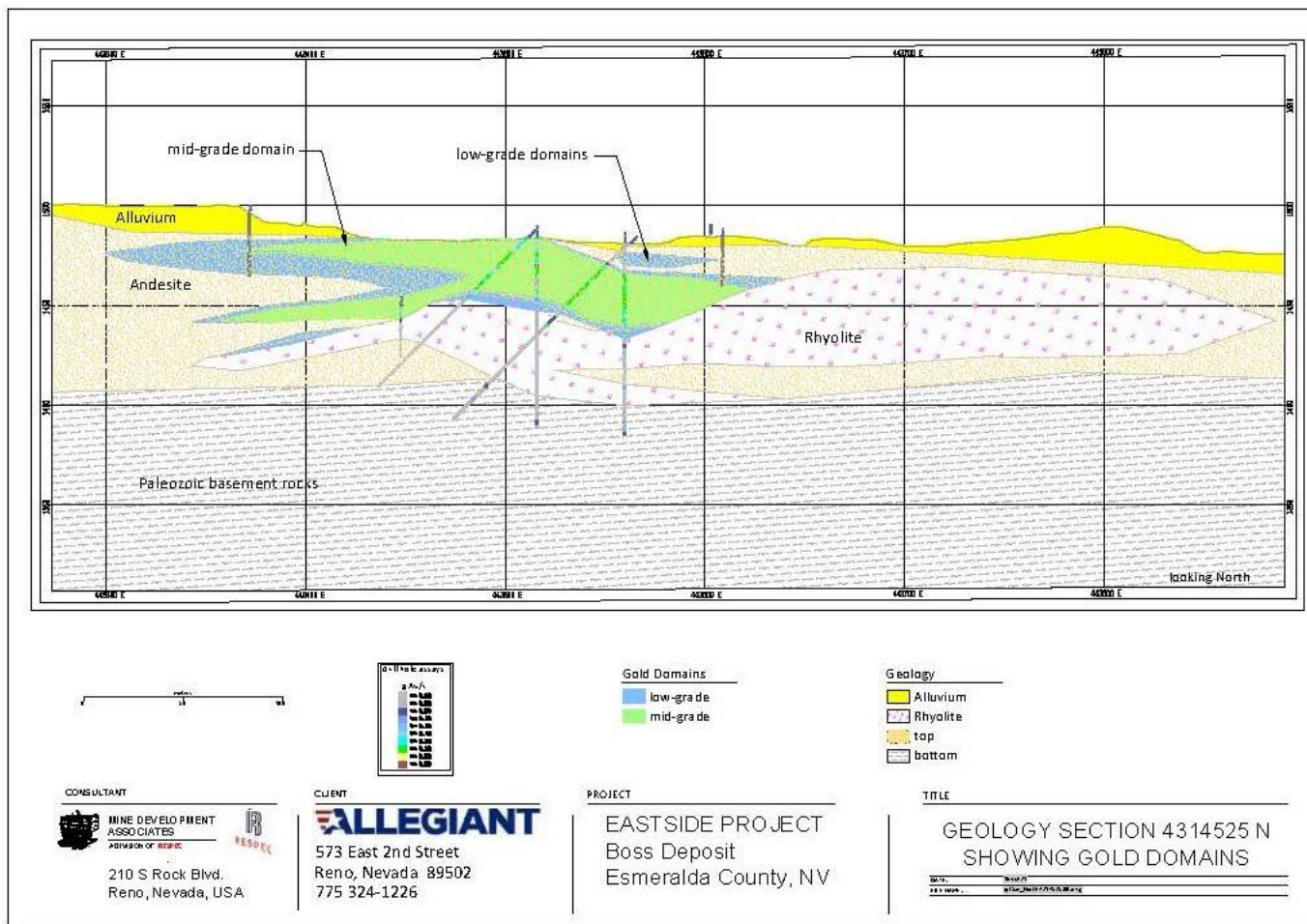
**Source: Mine Development Associates, July 30, 2021 “Updated Resource Estimate and NI 43-101 Technical Report, Eastside and Castle Gold-Silver Property, Esmeralda County, Nevada for Allegiant Gold Ltd.*

Boss Deposit Cross Section *

flanking a Rhyolite dome

The Castle tabular bodies are open ended and the resource will increase in size with additional drilling. *

50 m



*Source: Mine Development Associates, July 30, 2021 "Updated Resource Estimate and NI 43-101 Technical Report, Eastside and Castle Gold-Silver Property, Esmeralda County, Nevada for Allegiant Gold Ltd.

Berg Deposit

*flanking a Rhyolite dome (magnetic low) **

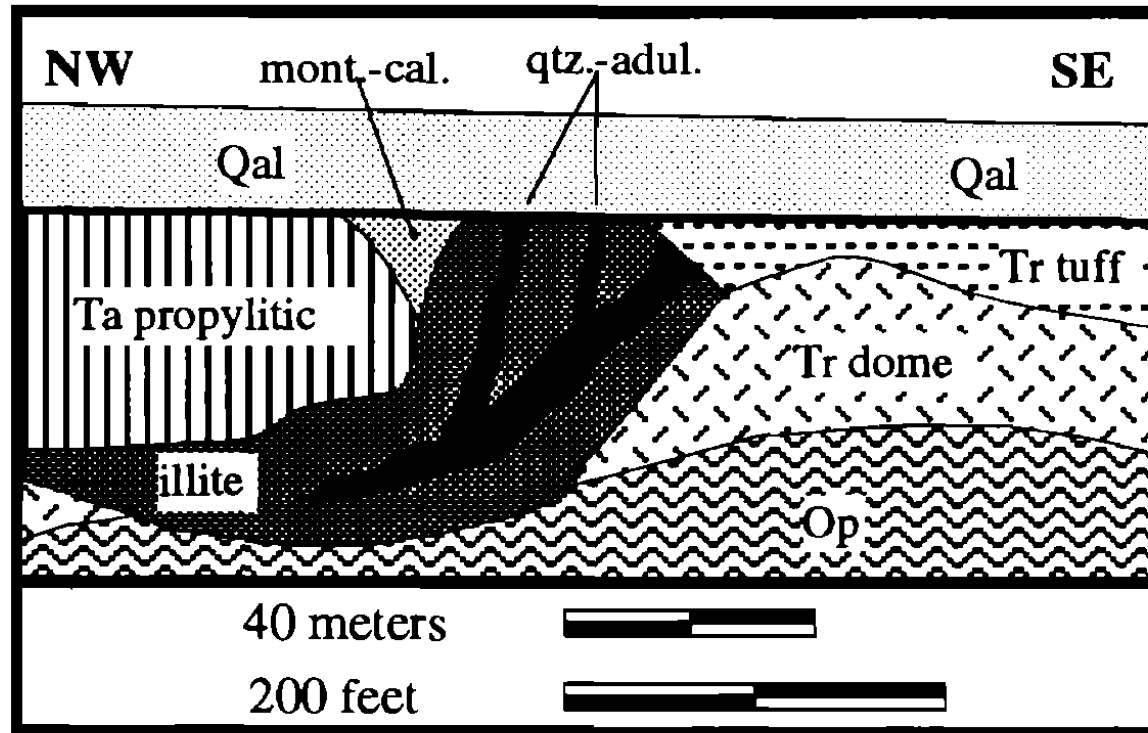
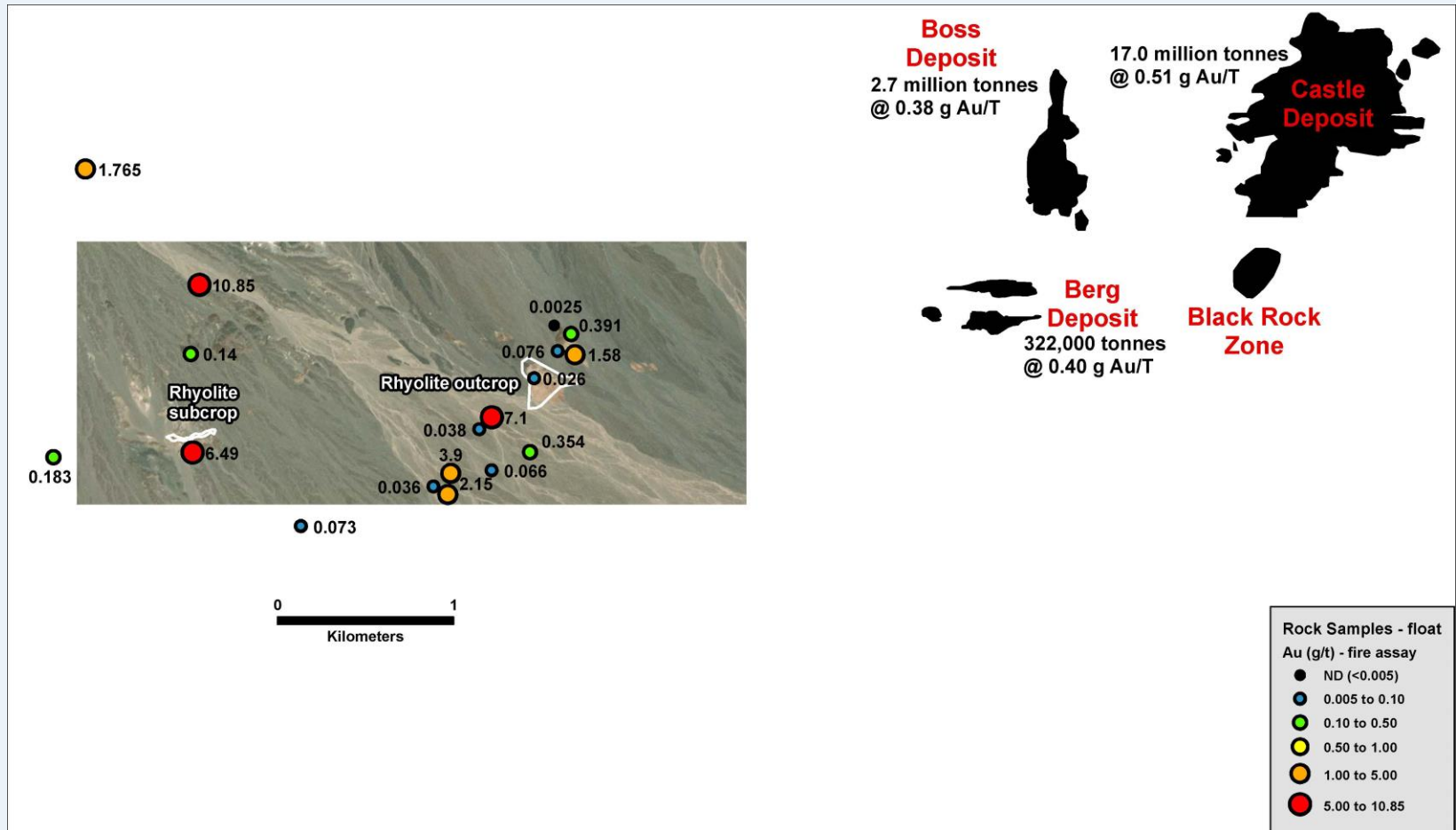


FIG. 6. Berg deposit. Quartz-adularia and illite alteration (directly associated with gold mineralization).

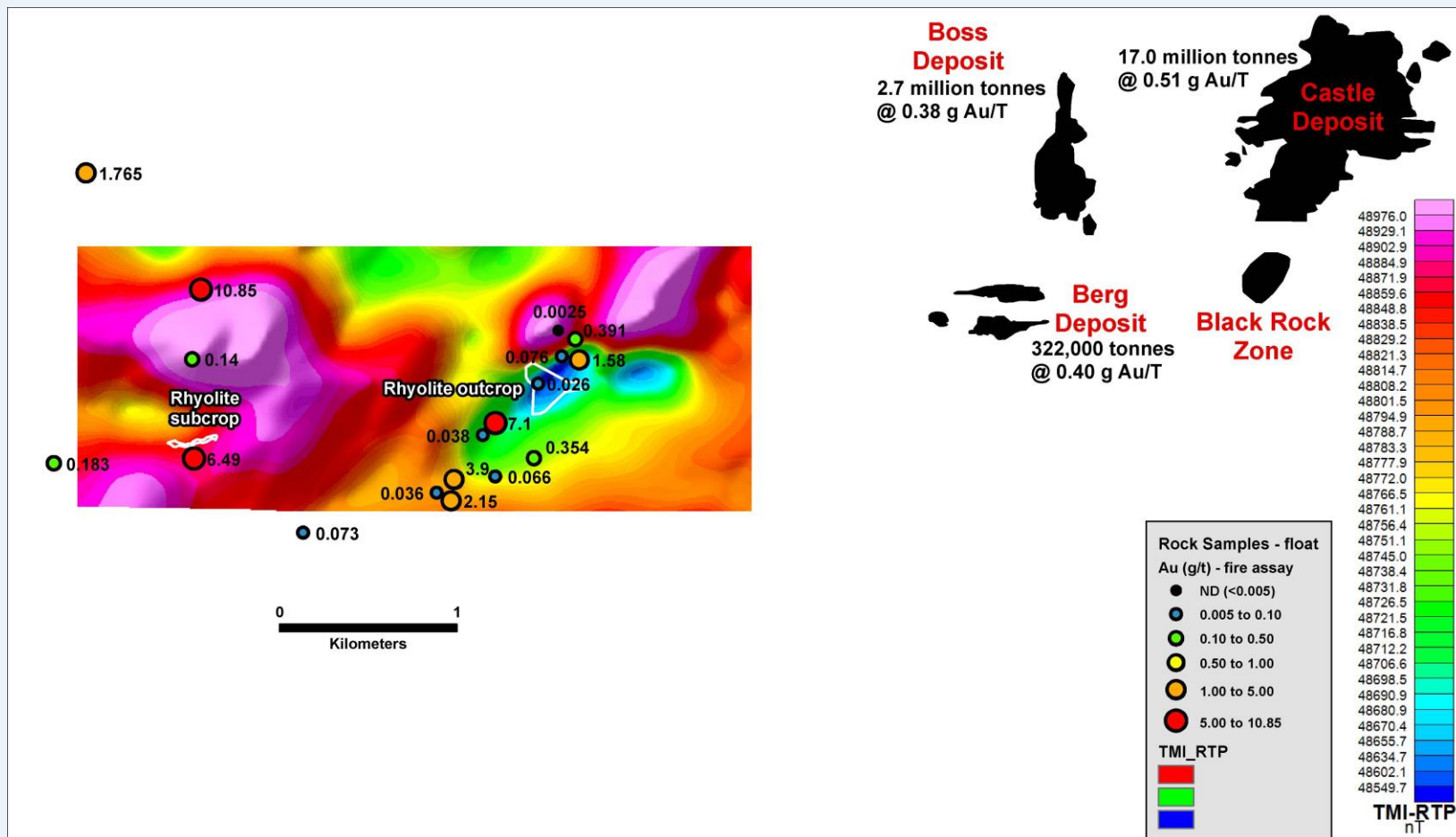
**Source: Diner and Strachan, 1994, Geology of the Boss Mining Area, Gilbert District, Esmeralda County, Nevada: Economic Geology, Vol 89, pp 1176-1182.*

Nighthawk – Sampling mineralized float in close proximity to Rhyolite dome outcrop and subcrop



Nighthawk – Aeromagnetics (TMI-RTP)

Rhyolite = magnetic low



Nighthawk Mineralized Float



10.9 g Au/t, 2.5 g Ag/t



7.1 g Au/t, 11 g Ag/t

Nighthawk Mineralized Float



1.3 g Au/t, 284 g Ag/t



6.5 g Au/t, 6.0 g Ag/t

Nighthawk Property - Progress

- Prospecting finds Au/Ag mineralized outcrop and float associated with **Rhyolite domes**, as at Eastside and Castle/Boss/Berg
- Aeromagnetics defined prospective **Rhyolite domes** and **linear structures** under pediment, adjacent to and along strike from Castle/Boss/Berg
- Pediment erosional level exposes large prospective areas covered with relatively thin alluvium

Nighthawk Property – Next Steps

- Ground follow-up of multiple new targets generated by aeromagnetic survey
- Geophysical surveys TBD (gravity, CSAMT, IP)
- Reverse Circulation drilling to test and rank targets
- Core drilling for structural data

Bitterroot Resources Ltd.

TSX-V symbol – BTT

Common Shares Outstanding: 93,684,000

Fully diluted: 113,267,000

***Suite 206-B
1571 Bellevue Avenue
West Vancouver, British Columbia
Canada, V7V 1A6***

Tel: 604 922 1351

Contact – Michael Carr, CEO

Email: infoman@bitterrootresources.com

Website: www.bitterrootresources.com